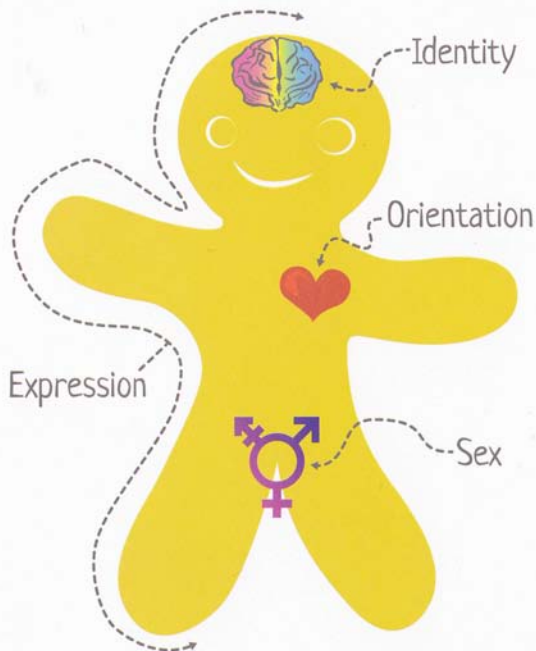


# The Genderbread Person

The Genderbread Person is an infographic that breaks down gender identity, gender expression, biological sex, and sexual orientation into an easy to understand visual.



 **Gender Identity**

Woman Genderqueer Man

Gender identity is how you, in your head, think about and experience gender, and how you interpret what that means in a social context.

 **Gender Expression**


Feminine Androgynous Masculine

Gender expression is how you demonstrate your gender (based on traditional gender roles) through the ways you act, dress, behave, and interact

 **Biological Sex**

Female Intersex Male

Biological sex refers to the objectively measurable organs, hormones, and chromosomes.  
Female = vagina, ovaries, XX chromosomes; male = penis, testes, XY chromosomes;  
intersex = a combination of the two.

 **Sexual Orientation**

Heterosexual Bisexual Homosexual

Sexual orientation is who you are emotionally and physically attracted to, based on their sex and/or gender.

# Pyramid of Hate

## Genocide

The act or intent to deliberately and systematically annihilate an entire people

## Bias-Motivated Violence

### Individual

Murder  
Rape  
Assault  
Threats

### Community

Arson  
Terrorism  
Vandalism  
Desecration

## Discrimination

Economic Discrimination  
Political Discrimination  
Employment Discrimination  
Housing Discrimination  
Educational Discrimination  
Segregation

## Individual Acts of Prejudice

Bullying  
Ridicule

Name-calling  
Social Avoidance

Slurs/Epithets  
De-humanization

## Bias

Stereotyping  
Insensitive remarks

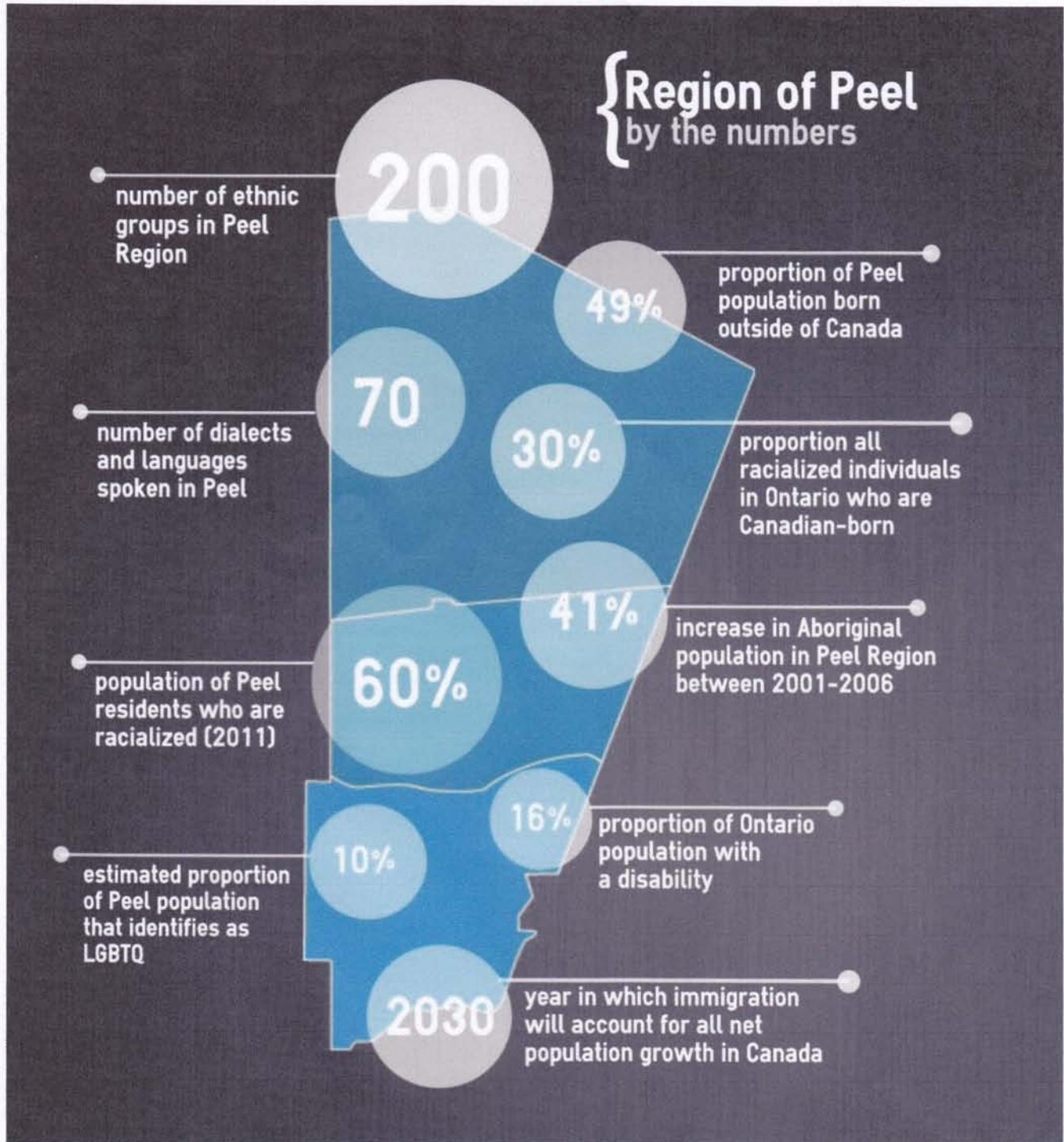
Belittling Jokes  
Non-inclusive language

Justifying biases by seeking out like-minded people

Accepting negative information/screening out positive information

## Region of Peel by the numbers

The Region of Peel has seen rapid and continuous growth over the past 30 years. Peel has welcomed newcomers from across the globe and is seen as one of the most diverse communities in Canada.



### Glossary of Terms:

- **LGBTQ** refers to the lesbian, gay, bisexual, transgender, transsexual, intersex, queer, questioning, and two-spirited communities (LGBTTIQQ2S).
- **Racialized:** The Ontario Human Rights Commission describes communities facing racism as "racialized." Race is a social construct. This means that society forms ideas of race based on geographic, historical, political, economic, social and cultural factors, as well as physical traits, even though none of these can be used to justify racial superiority or racial prejudice.

<http://www.ohrc.on.ca/en/racial-discrimination-brochure>



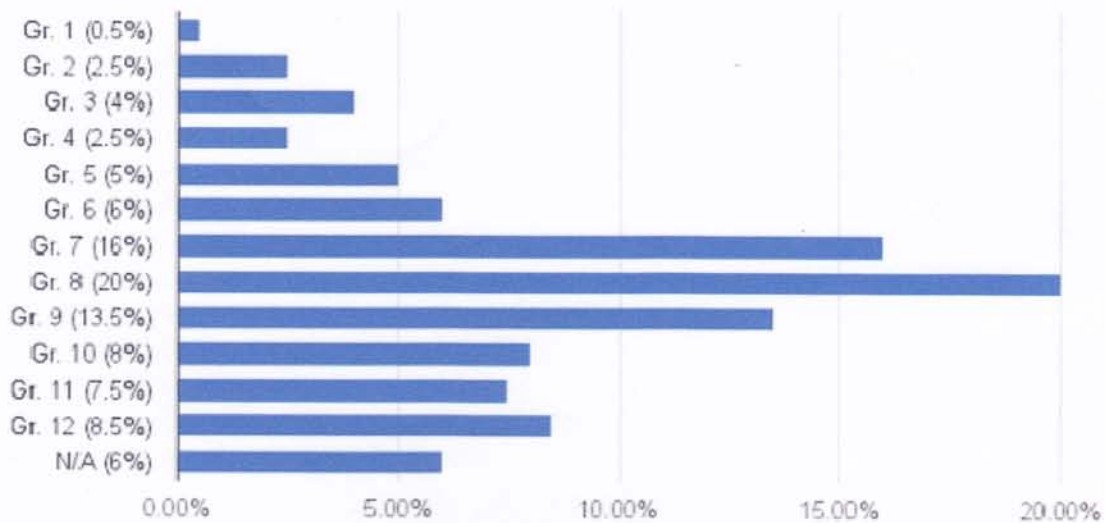
## STOP A BULLY School Bullying Statistics

Canada Statistics and Graphs on Incident Reports, School Join Requests,  
Types of Bullying, Duration of Bullying, Bullying Bystanders and more.

<http://www.stopabully.ca/about-us/stopabully-statistics>



### INCIDENT OFFENDER GRADE (StopABully School Reports from May 2009 - July 2013)



### DURATION OF BULLYING (StopABully School Reports from Sept 2011 - March 2012)

